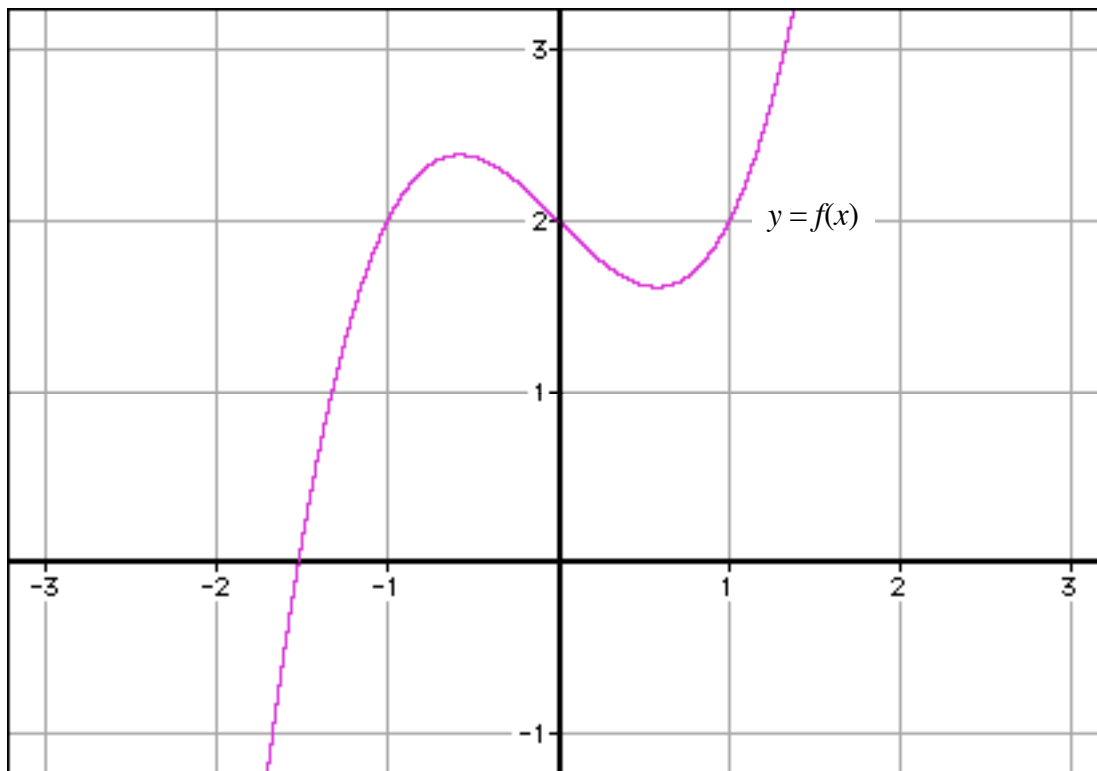


Handout 2: Working with expressions in function notation

Let f be the function defined by the graph shown below and g the function defined by the table given below.

NOTE: 1. g is only defined for $x = -2, x = -1, x = 0, x = 1,$ and $x = 2$.



x	-2	-1	0	1	2
$g(x)$	-1	2	3	2	-1

(a) Evaluate the numerical value of: $2 \cdot f(1) - g(0)$

(b) Find all values of x for which: $f(x) = 2$.

(c) Find all values of x for which: $f(x) = g(x)$.